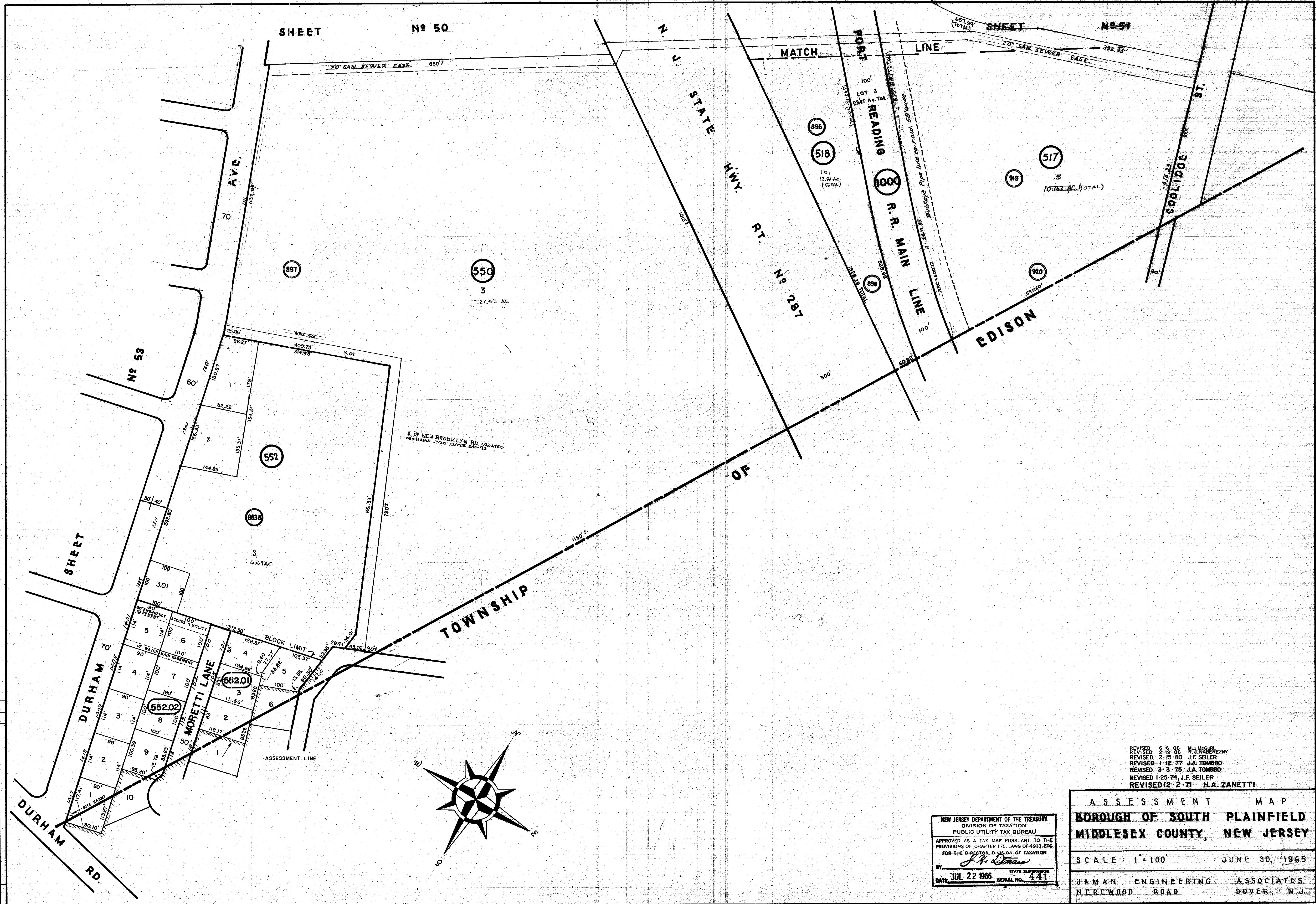
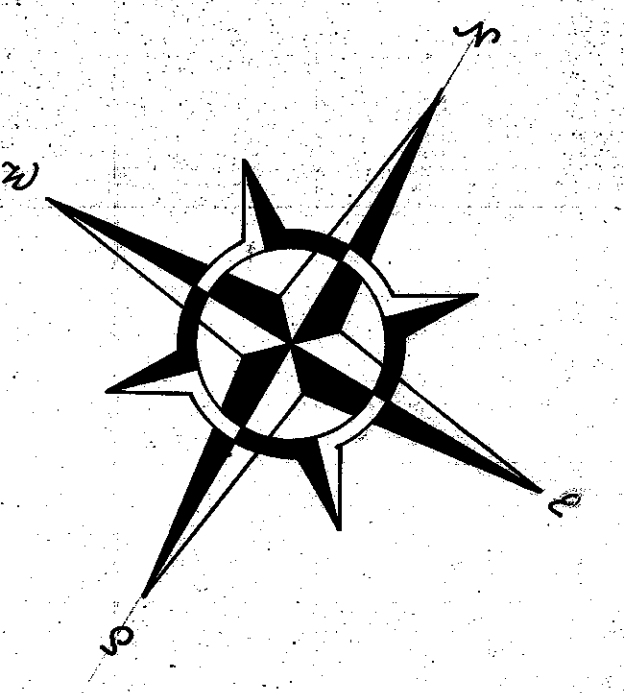


SHEET No 50

SHEET No 51



DATE	DESCRIPTION	BY	CHK



REVISED 6-5-96 N.J. MUGER
 REVISED 2-19-86 R.J. NABEREZNY
 REVISED 2-15-80 J.F. SEILER
 REVISED 1-12-77 J.A. TOMBARO
 REVISED 3-3-75 J.A. TOMBARO
 REVISED 1-25-74 J.F. SEILER
 REVISED 12-2-71 H.A. ZANETTI

NEW JERSEY DEPARTMENT OF THE TREASURY
 DIVISION OF TAXATION
 PUBLIC UTILITY TAX BUREAU
 APPROVED AS A TAX MAP PURSUANT TO THE
 PROVISIONS OF CHAPTER 175, LAWS OF 1913, ETC.
 FOR THE DIRECTOR, DIVISION OF TAXATION
 BY *J. H. Romano*
 DATE JUL 22 1966 STATE SUPERVISOR SERIAL NO. 441

ASSESSMENT MAP
 BOROUGH OF SOUTH PLAINFIELD
 MIDDLESEX COUNTY, NEW JERSEY
 SCALE: 1"=100 JUNE 30, 1965
 JAMAN ENGINEERING ASSOCIATES
 NEREWOOD ROAD DOVER, N.J.