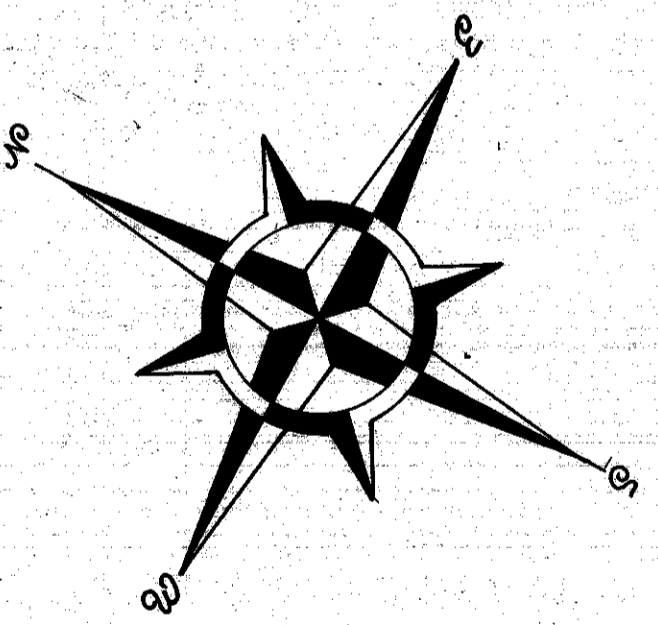
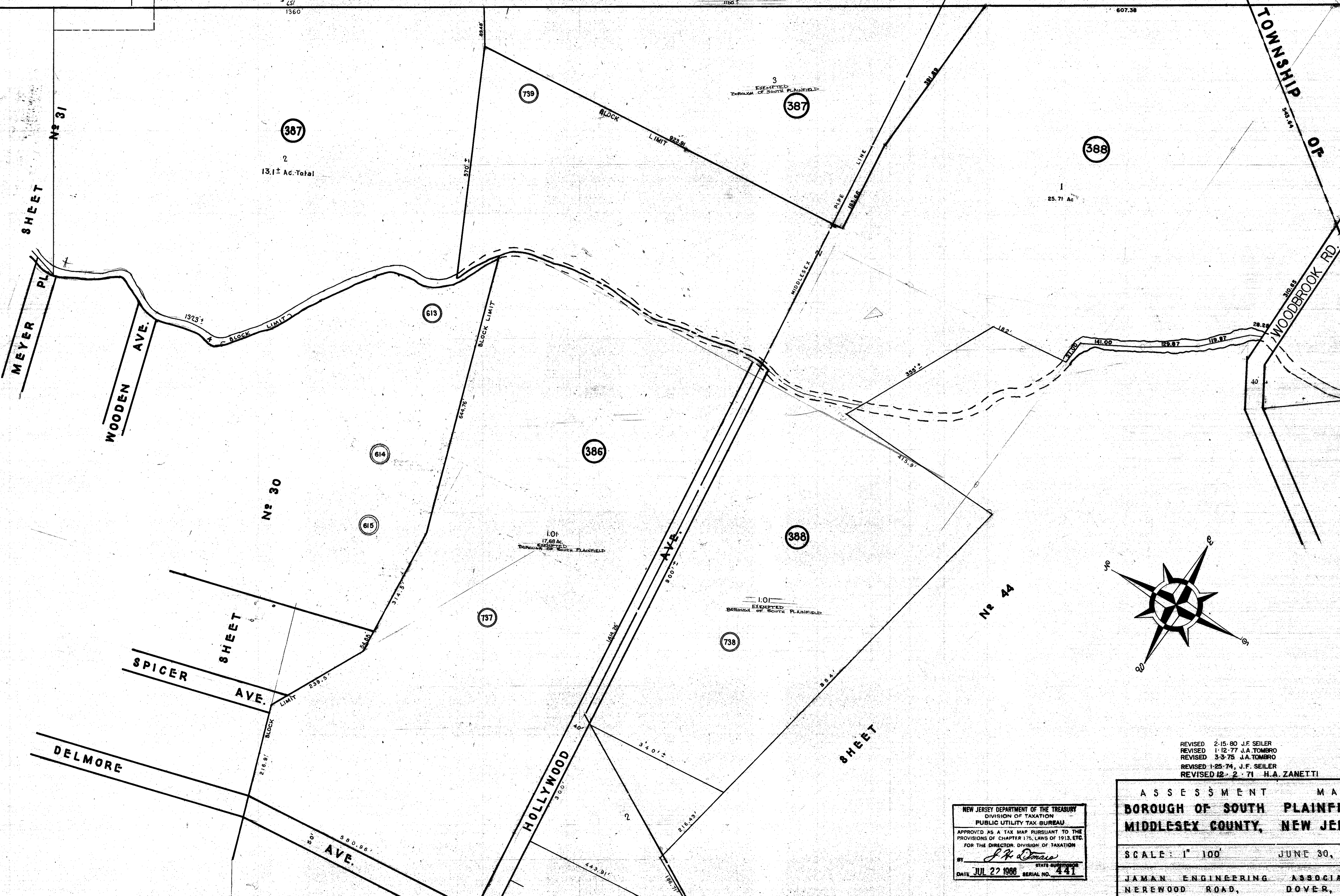


SHEET No 33

LEHIGH VALLEY PERTH AMBOY BRANCH RAILROAD

TOWNSHIP OF EDISON



REVISIONS	
DATE	NAME
2/21/58	RICHARD A. MORRIS PLS
	LIC. No. GB 25963

REVISED 2-15-80 J.F. SELER
 REVISED 1-12-77 J.A. TOMBRO
 REVISED 3-3-75 J.A. TOMBRO
 REVISED 1-25-74 J.F. SELER
 REVISED 12-2-71 H.A. ZANETTI

NEW JERSEY DEPARTMENT OF THE TREASURY
 DIVISION OF TAXATION
 PUBLIC UTILITY TAX BUREAU
 APPROVED AS A TAX MAP PURSUANT TO THE
 PROVISIONS OF CHAPTER 175, LAWS OF 1913, ETC.
 FOR THE DIRECTOR, DIVISION OF TAXATION
 BY *J. H. [Signature]*
 DATE JUL 27 1966 SERIAL NO. 441

ASSESSMENT MAP
 BOROUGH OF SOUTH PLAINFIELD
 MIDDLESEX COUNTY, NEW JERSEY
 SCALE: 1" = 100' JUNE 30, 1965
 JAMAN ENGINEERING ASSOCIATES
 NERWOOD ROAD, DOVER, N. J.