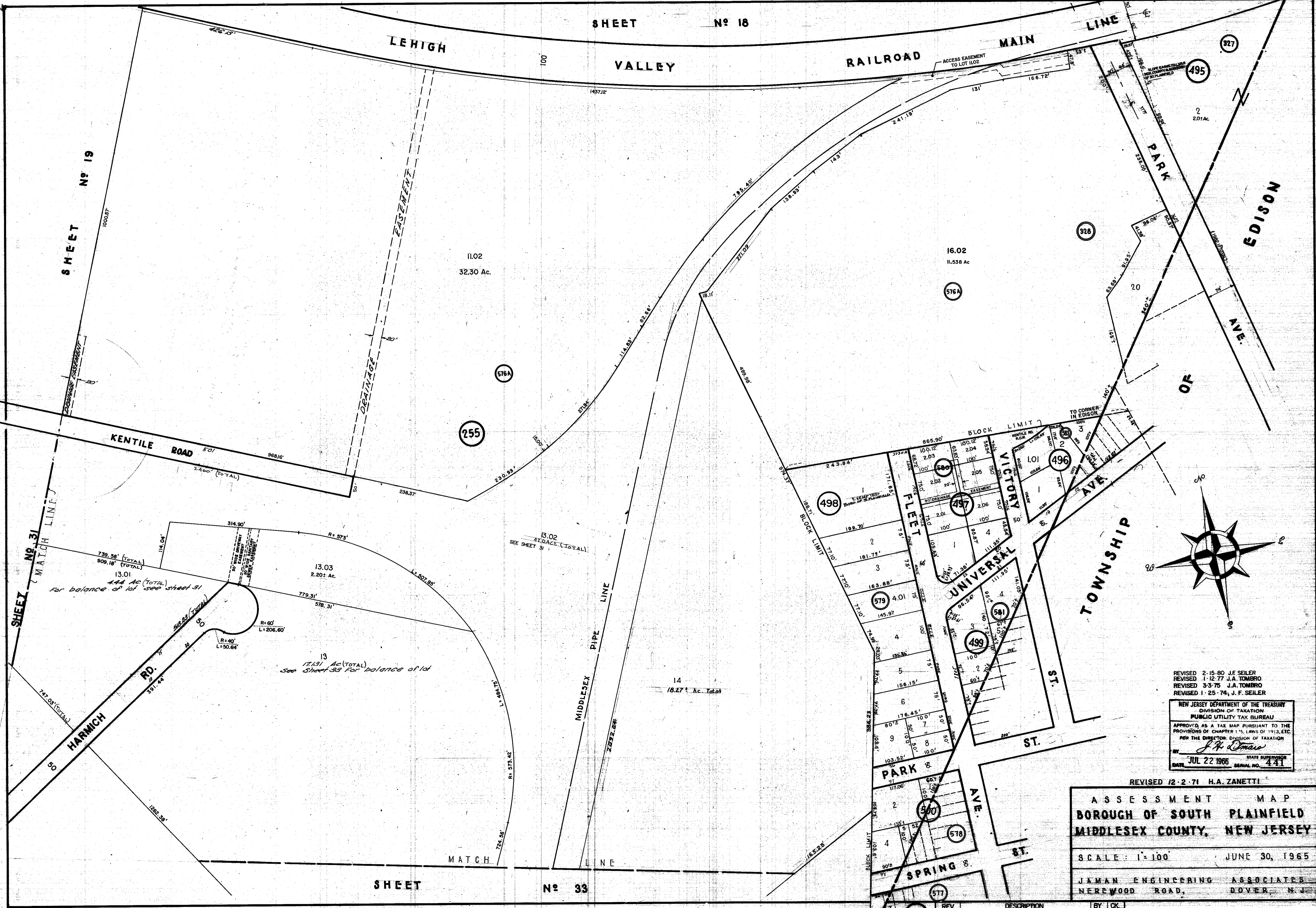


SHEET No 18

SHEET No 19

SHEET No 33



REVISED 2-15-80 J.F. SEILER  
 REVISED 1-12-77 J.A. TOMBRIO  
 REVISED 3-5-75 J.A. TOMBRIO  
 REVISED 1-25-74 J.F. SEILER

NEW JERSEY DEPARTMENT OF THE TREASURY  
 DIVISION OF TAXATION  
 PUBLIC UTILITY TAX BUREAU

APPROVED AS A TAX MAP PURSUANT TO THE  
 PROVISIONS OF CHAPTER 175, LAWS OF 1913, ETC.  
 FOR THE DIVISION OF TAXATION

BY *J. H. D'Amico*  
 DATE JUL 22 1965 STATE SUPERVISOR  
 SERIAL NO. 441

REVISED 12-2-71 H.A. ZANETTI

**ASSESSMENT MAP**  
**BOROUGH OF SOUTH PLAINFIELD**  
**MIDDLESEX COUNTY, NEW JERSEY**

SCALE: 1" = 100' JUNE 30, 1965

JAMAN ENGINEERING ASSOCIATES  
 NERWOOD ROAD, DOVER, N.J.

REV.	DESCRIPTION	BY	CK.
1-13-60	Blk. 495 L-2 Road Widening & Deleted Easement only 1957 Deed	C.J.S.	J.H.D.
11-5-61	Blk. 500 L-2 B-3 Combined New Lot 2 By Deed	C.J.S.	J.H.D.
5-23-62	Corrections Per Filed Map Blks. 496 Rev. 500	C.J.S.	J.H.D.
12-16-62	Blk. 498 L-1, B-3 NE 82-7	C.J.S.	J.H.D.
3/5/68	RICHARD A. MORALLE PLS 88 25663	R.S.	RAM