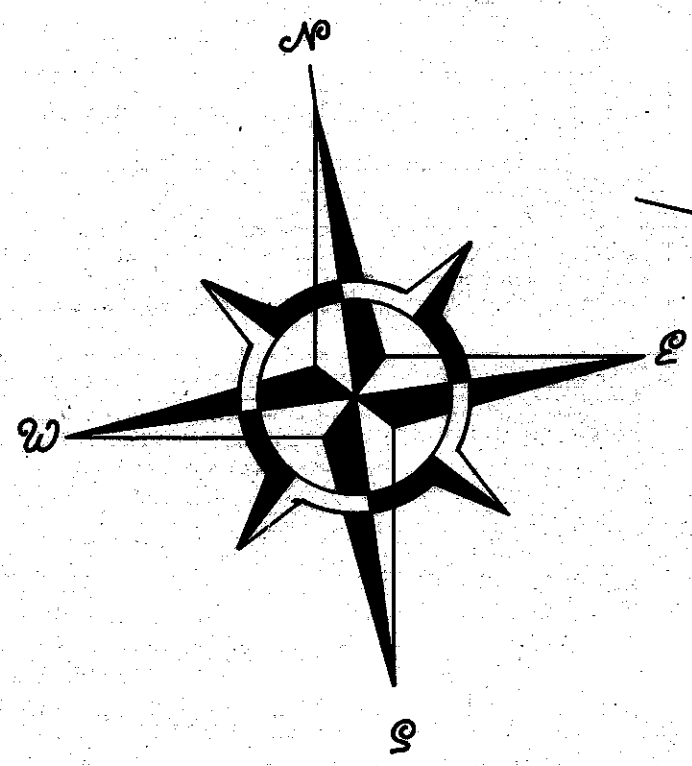
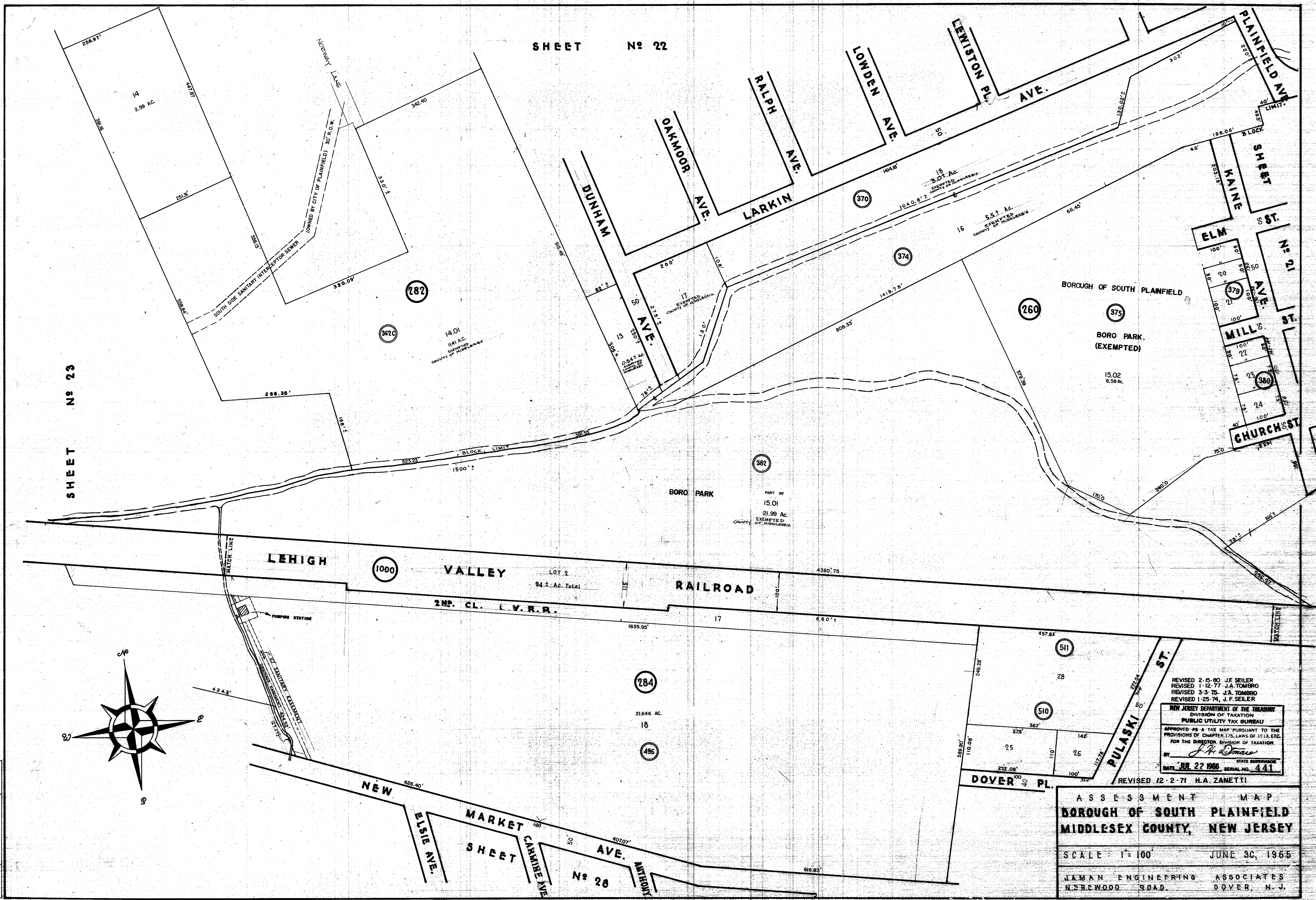


SHEET No 22

SHEET No 23

SHEET No 21



REVISIONS	
DATE	NAME
3/27/68	RICHARD A. MOVILLE
	88 ZENISS

REVISED 2-15-80 J.F. SEILER
 REVISED 1-12-77 J.A. TOMBRIO
 REVISED 3-3-75 J.A. TOMBRIO
 REVISED 1-25-74 J.F. SEILER

NEW JERSEY DEPARTMENT OF THE TREASURY
 DIVISION OF TAXATION
 PUBLIC UTILITY TAX BUREAU

APPROVED AS A TAX MAP PURSUANT TO THE
 PROVISIONS OF CHAPTER 175, LAWS OF 1913, ETC.
 FOR THE DIRECTOR, DIVISION OF TAXATION

BY *J. H. ZANETTI* STATE SUPERVISOR
 DATE JUL 22 1966 SERIAL NO. 441

REVISED 12-2-71 H.A. ZANETTI

ASSESSMENT MAP
 BOROUGH OF SOUTH PLAINFIELD
 MIDDLESEX COUNTY, NEW JERSEY

SCALE 1" = 100' JUNE 30, 1965

JAMAN ENGINEERING ASSOCIATES
 NEWWOOD ROAD DOVER, N. J.