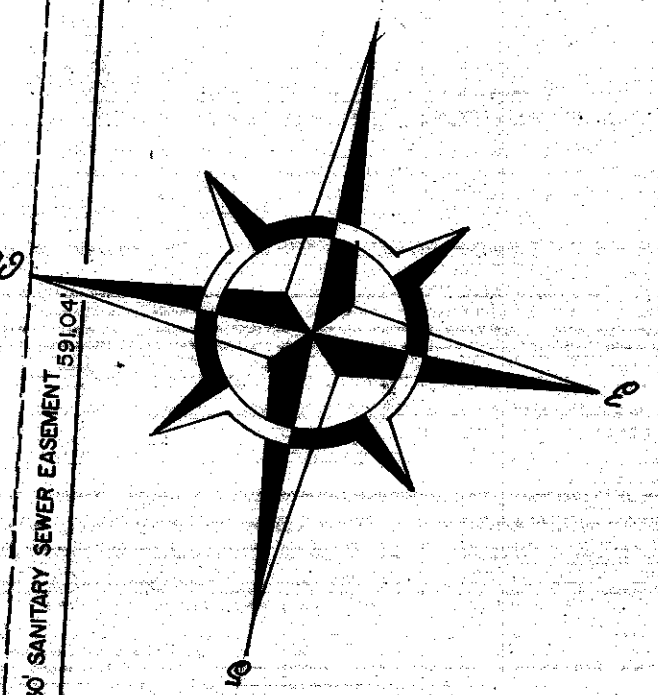
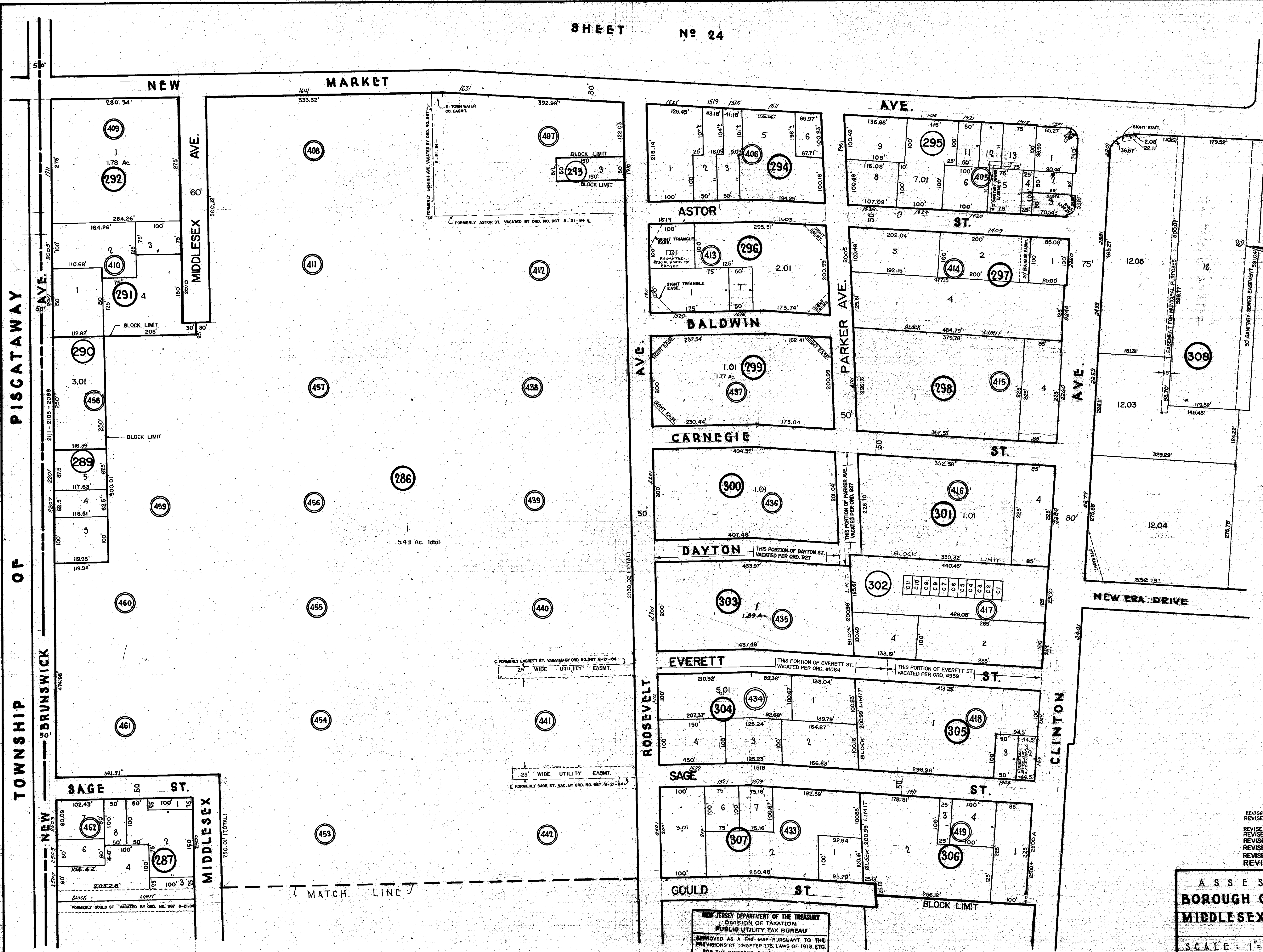


SHEET N° 26



DATE	REVISIONS	NAME	LIC. NO.
3/7/08	1	RICHARD A. MORALLE PLS	0823883



ASSESSMENT MAP  
 BOROUGH OF SOUTH PLAINFIELD  
 MIDDLESEX COUNTY, NEW JERSEY

SCALE: 1" = 100' JUNE 30, 1965

JAMAN ENGINEERING ASSOCIATES  
 HERBWOOD ROAD DOVER N.J.

NEW JERSEY DEPARTMENT OF THE TREASURY  
 DIVISION OF TAXATION  
 PUBLIC UTILITY TAX BUREAU

APPROVED AS A TAX MAP PURSUANT TO THE  
 PROVISIONS OF CHAPTER 175, LAWS OF 1913, ETC.  
 FOR THE DIRECTOR DIVISION OF TAXATION

BY: *J. P. Demasi*  
 STATE SUPERVISOR

DATE: JUL 22 1966 SERIAL NO. 441

REVISED 5-10-64 MICHAEL J. MCGURL P.L.S. 36986 C.M.E. Assoc.  
 REVISED 3/12/04 MICHAEL J. MCGURL P.L.S. 36338 C.M.E. Assoc.  
 REVISED 5/14/02 MICHAEL J. MCGURL P.L.S. 36338  
 REVISED 2-15-80 J.F. SEILER  
 REVISED 1-12-77 J.A. TOMBARO  
 REVISED 3-3-75 J.A. TOMBARO  
 REVISED 1-25-74 J.F. SEILER  
 REVISED 12-2-71 H.A. ZANETTI

REV.	DESCRIPTION	BY	CC
1-14-61	BK. 295 Lots 1-3, Roadway Acquisition By N.J.D.O.T.	C.J.S.	2/27
6-30-61	BK. 298 Lots 2, 3 & 5 Combined into Lot 1 Per Assessor	C.J.S.	2/27
5-6-63	BK. 305 Lot 1 Road Widening Per Deed	C.J.S.	2/27
8-14-02	BK. 296 Lot 101 SIGHT EASE ADDED	C.J.S.	2/27
8-12-04	BK. 286 Lots 1, 2, 3, 4, 5, 6, 7, 8, 9, 10, 11, 12, 13, 14, 15, 16, 17, 18, 19, 20, 21, 22, 23, 24, 25, 26, 27, 28, 29, 30, 31, 32, 33, 34, 35, 36, 37, 38, 39, 40, 41, 42, 43, 44, 45, 46, 47, 48, 49, 50, 51, 52, 53, 54, 55, 56, 57, 58, 59, 60, 61, 62, 63, 64, 65, 66, 67, 68, 69, 70, 71, 72, 73, 74, 75, 76, 77, 78, 79, 80, 81, 82, 83, 84, 85, 86, 87, 88, 89, 90, 91, 92, 93, 94, 95, 96, 97, 98, 99, 100	C.J.S.	2/27