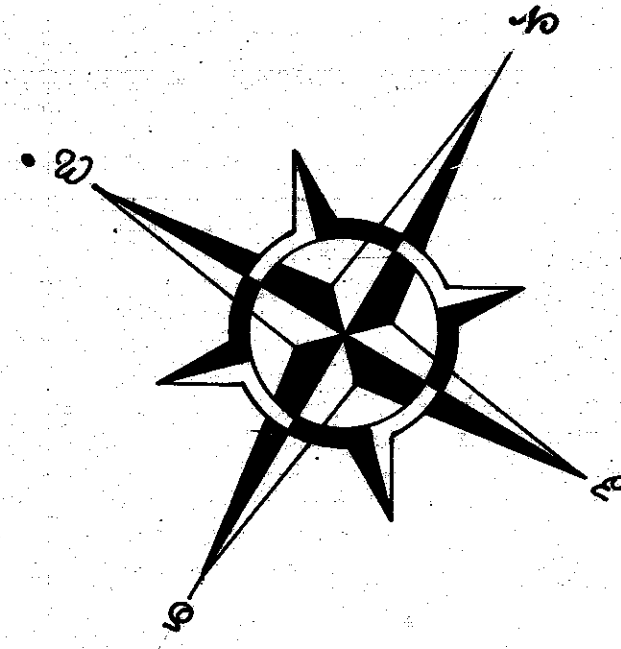
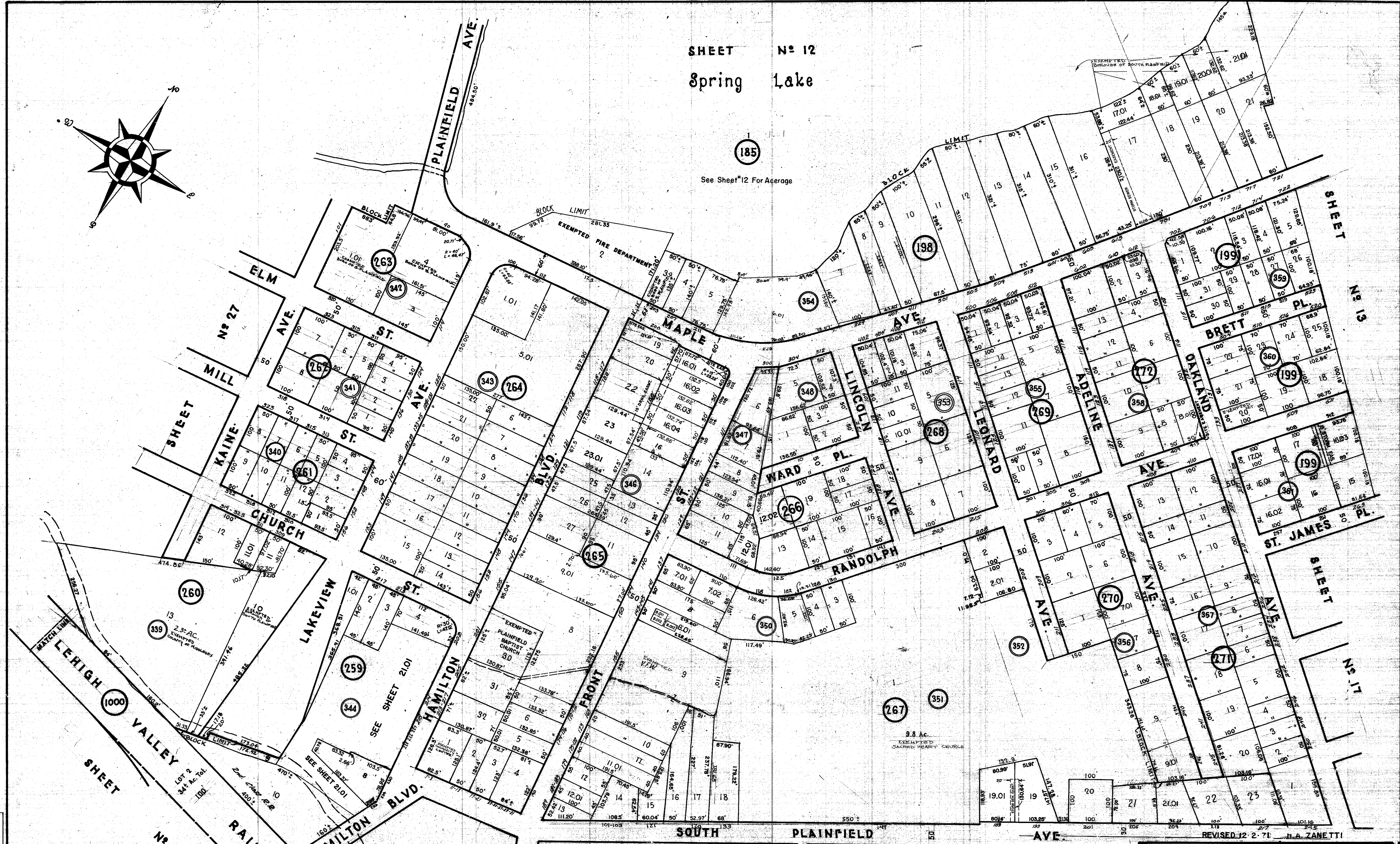


SHEET No 12  
Spring Lake



185  
See Sheet #12 For Acreage



REVISIONS	DATE	BY	DESCRIPTION
1	3/31/08	RICHARD A. MORALLE, PLS	PREPARED
2			
3			
4			
5			
6			
7			
8			
9			
10			

REVISED 5-11-07 C.M.E. ASSOC.  
 REVISED 8-29-02 M.J.M. GURL  
 REVISED 2-15-80 J.F. SEILER  
 REVISED 1-12-77 J.A. TOMBARO  
 REVISED 3-5-75 LA TOMBARO  
 REVISED 1-25-74 J.J. SEILER

NEW JERSEY DEPARTMENT OF THE TREASURY  
 DIVISION OF TAXATION  
 PUBLIC UTILITY TAX BUREAU  
 APPROVED AS A TAX MAP PURSUANT TO THE  
 PROVISIONS OF CHAPTER 175, LAWS OF 1913, ETC.  
 FOR THE DIRECTOR, DIVISION OF TAXATION  
 BY *J. J. Seiler*  
 DATE JUL 22 1966 SERIAL NO. 441

ASSESSMENT MAP  
 BOROUGH OF SOUTH PLAINFIELD  
 MIDDLESEX COUNTY, NEW JERSEY  
 SCALE: 1" = 100' JUNE 30, 1965  
 JAMAN ENGINEERING ASSOCIATES  
 WIREWOOD ROAD DOVER, N.J.

REV	DESCRIPTION	BY	DATE
1-7-61	Blk 265 Lot 19 R.O.W. Dedication	C.A.S.	7/27/61
1-7-63	Blk 125 Lot 2 & 3 Dedication	R.R.	7/27/63
5-20-67	Blk 125 Lots 10, 11, 12, 13, 14, 15, 16, 17, 18, 19, 20, 21, 22, 23, 24, 25, 26, 27, 28, 29, 30, 31, 32, 33, 34, 35, 36, 37, 38, 39, 40, 41, 42, 43, 44, 45, 46, 47, 48, 49, 50, 51, 52, 53, 54, 55, 56, 57, 58, 59, 60, 61, 62, 63, 64, 65, 66, 67, 68, 69, 70, 71, 72, 73, 74, 75, 76, 77, 78, 79, 80, 81, 82, 83, 84, 85, 86, 87, 88, 89, 90, 91, 92, 93, 94, 95, 96, 97, 98, 99, 100	R.R.	5/20/67
4-30-68	Richard A. Moralle, P.E. PLS. 3825663	A.G.	4/30/68