

SHEET No 14

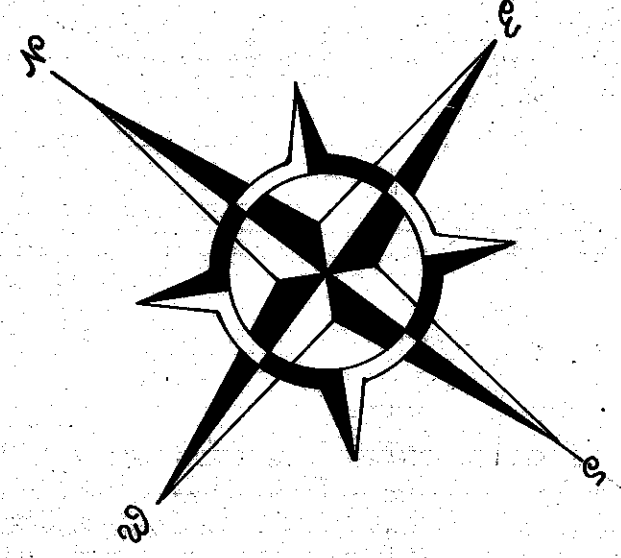
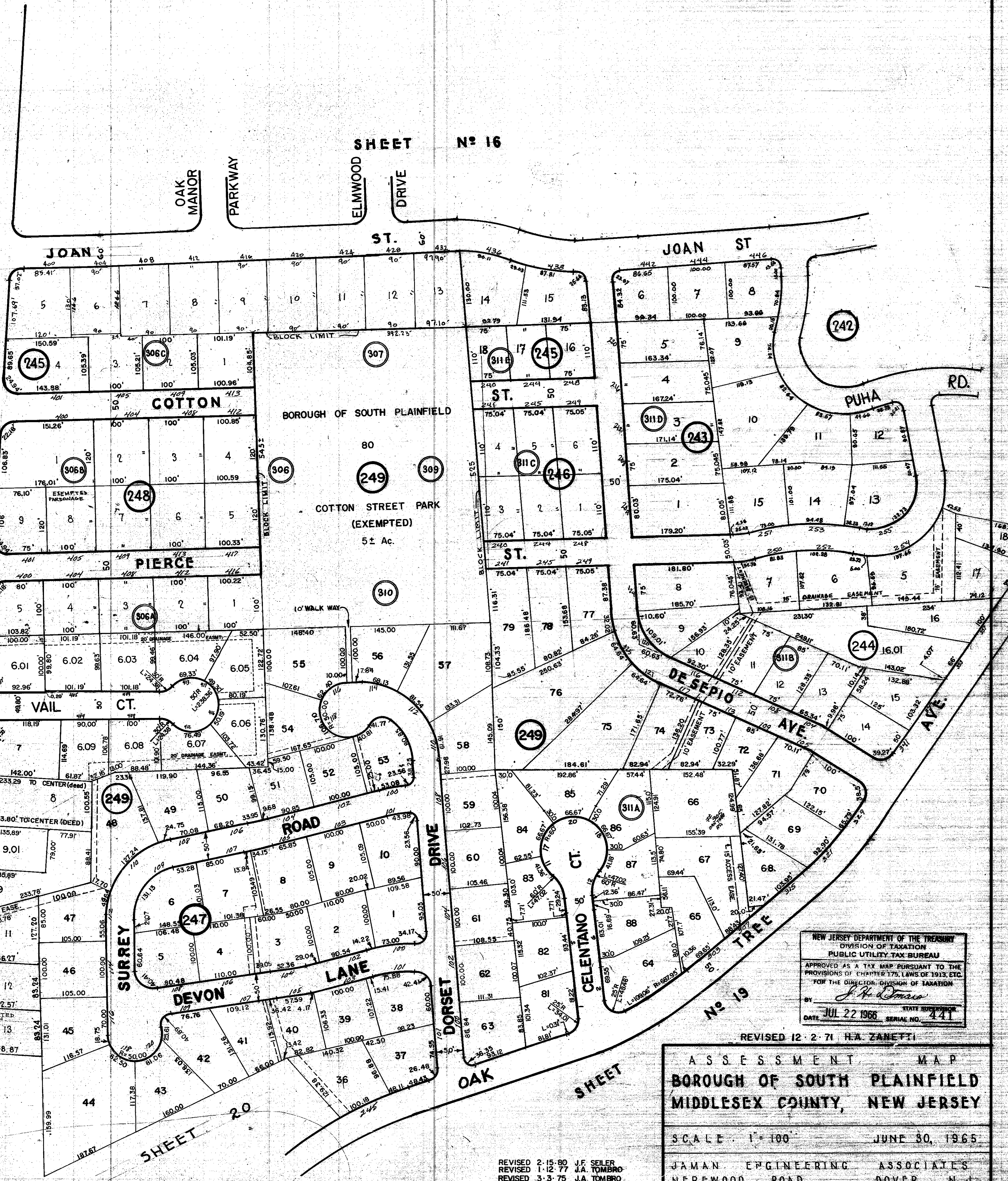
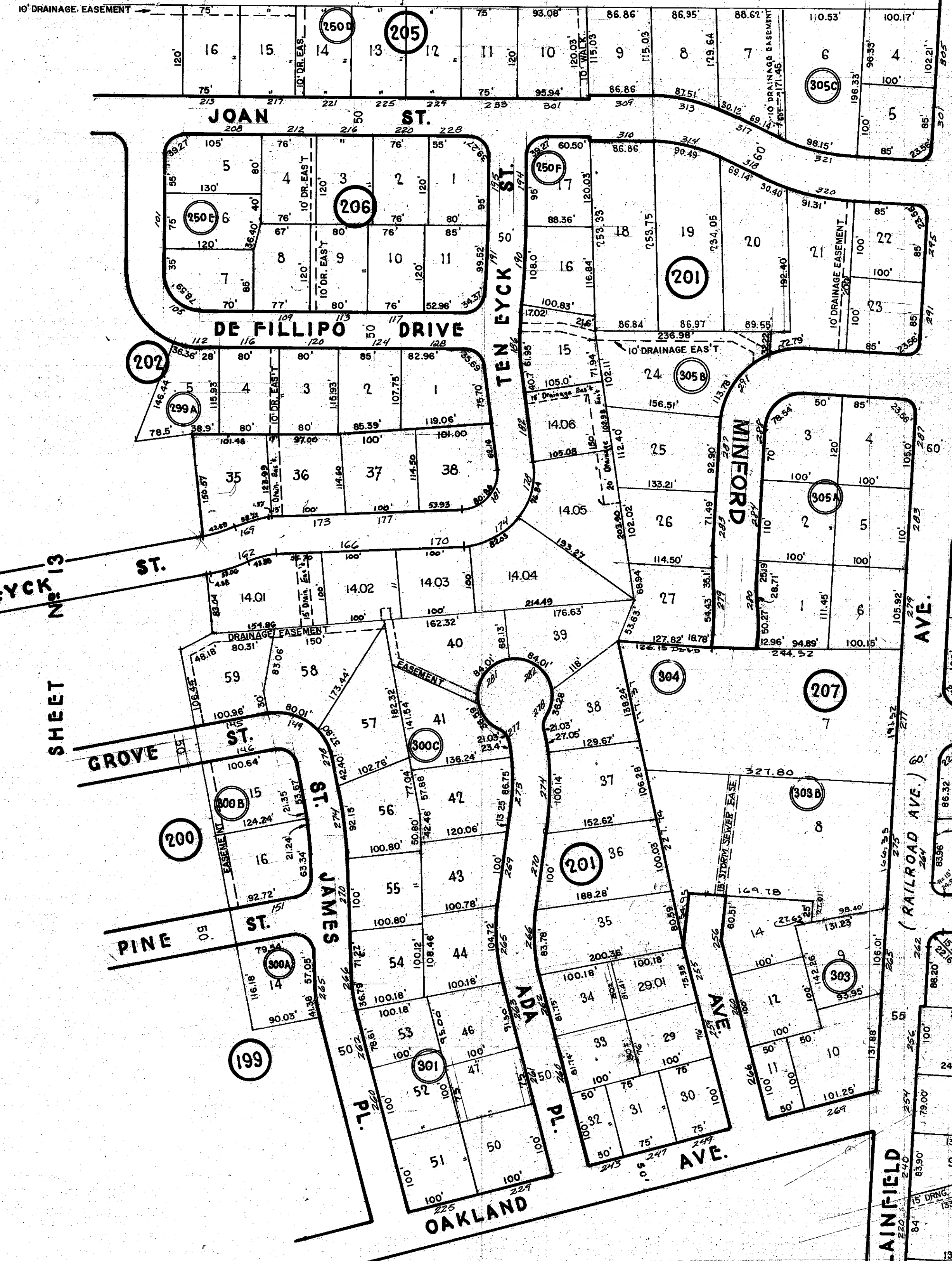
SHEET No 16

SHEET No 21

SHEET No 19

SHEET 20

3/31/68 RICHARD A. MORALE PLS. 68229883 CS RAM
5/27/68 JAMES J. TOMBARO PLS. 68229883 CS RAM
REVISION DESCRIPTION
REVISED BY CHK. BY



NEW JERSEY DEPARTMENT OF THE TREASURY
DIVISION OF TAXATION
PUBLIC UTILITY TAX BUREAU
APPROVED AS A TAX MAP PURSUANT TO THE
PROVISIONS OF CHAPTER 175, LAWS OF 1952, ETC.
FOR THE DIRECTOR, DIVISION OF TAXATION
BY *J. H. [Signature]*
DATE JUL 22 1966 SERIAL NO. 441

REVISED 12-2-71 H.A. ZANETTI
ASSESSMENT MAP
BOROUGH OF SOUTH PLAINFIELD
MIDDLESEX COUNTY, NEW JERSEY
SCALE 1" = 100' JUNE 30, 1965
JAMAN ENGINEERING ASSOCIATES
NEREWOOD ROAD, DOVER, N.J.

REVISED 2-15-80 J.F. SELER
REVISED 1-12-77 J.A. TOMBARO
REVISED 3-3-75 J.A. TOMBARO
REVISED 1-25-74 J.F. SELER