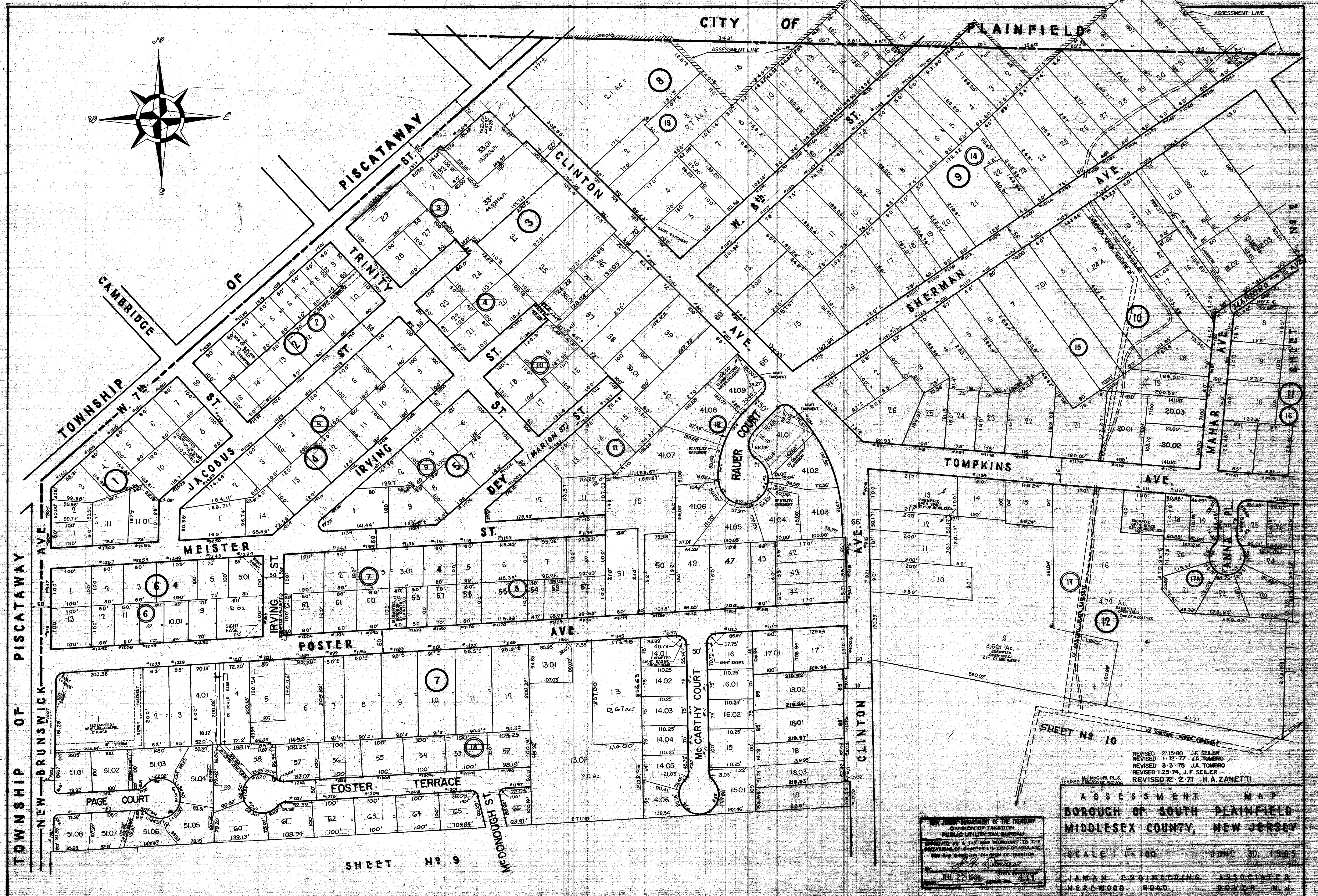


CITY OF PLAINFIELD



SHEET No 9

SHEET No 10

REVISED 2-15-80 J.F. SEILER
REVISED 1-12-77 J.A. TOMBO
REVISED 3-3-75 J.A. TOMBO
REVISED 1-25-74 J.F. SEILER
REVISED 12-2-71 H.A. ZANETTI

ASSESSMENT MAP
BOROUGH OF SOUTH PLAINFIELD
MIDDLESEX COUNTY, NEW JERSEY
SCALE 1"=100' JUN 30, 1985
JAMAN ENGINEERING ASSOCIATES
NEARWOOD ROAD, DOVER, N.J.

NEW JERSEY DEPARTMENT OF THE TREASURY
DIVISION OF TAXATION
PUBLIC UTILITY TAX BUREAU
APPROVED AS A TAX MAP PURSUANT TO THE
PROVISIONS OF CHAPTER 116, LAWS OF 1984, ETC.
BY: [Signature]
JUL 22 1985

REV.	DESCRIPTION	BY	CHK.
11-81	Map Submittal - Draft 26-31-Add. 33A	C.J.S.	11/81
12-81	Final Map Submittal - Submission 0411-51-B.7	C.J.S.	12/81
12-82	Final Map Submittal - Submission 0411-51-B.7	C.J.S.	12/82